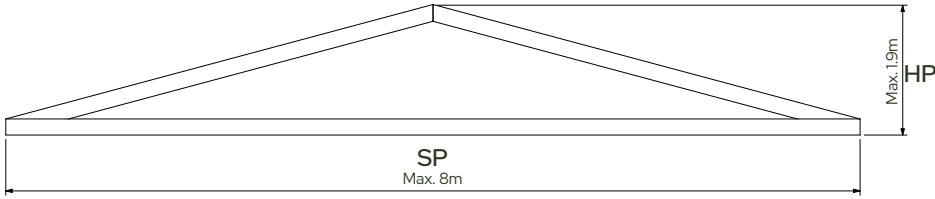
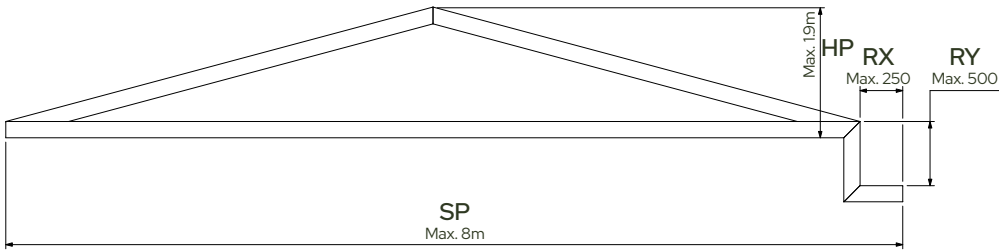


TRUSS ORDER PARAMETERS

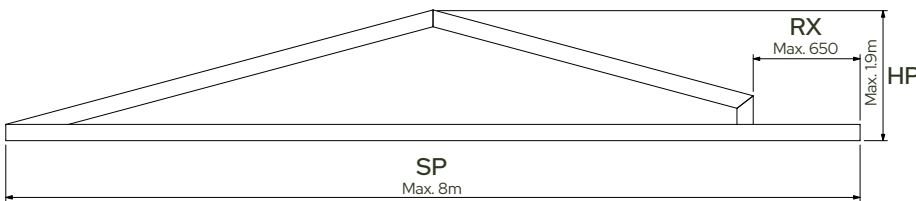
TRUSS CENTRE BOTTOM CHORD



SP _____
HT _____

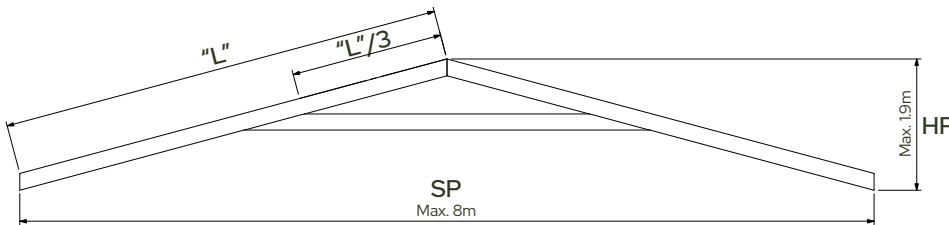


SP _____
HT _____
RX _____
RY _____
LX _____

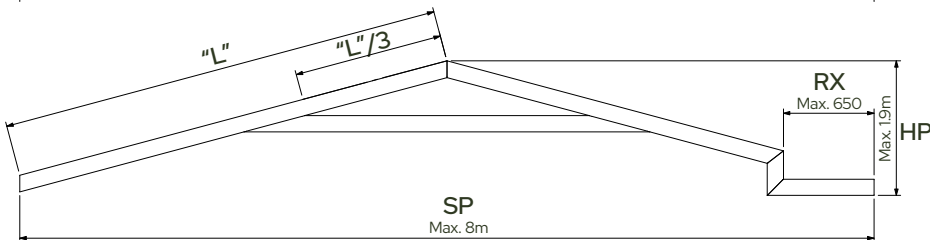


SP _____
HT _____
RX _____
LX _____

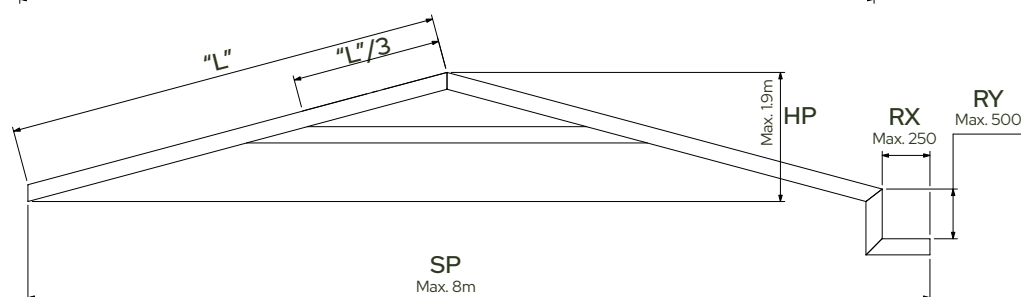
TRUSS CENTRE MID CHORD



SP _____
HT _____



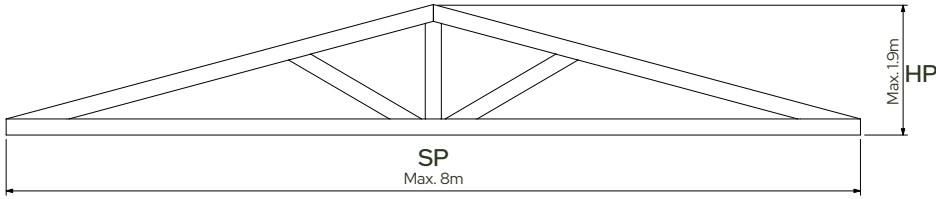
SP _____
HT _____
RX _____
LX _____



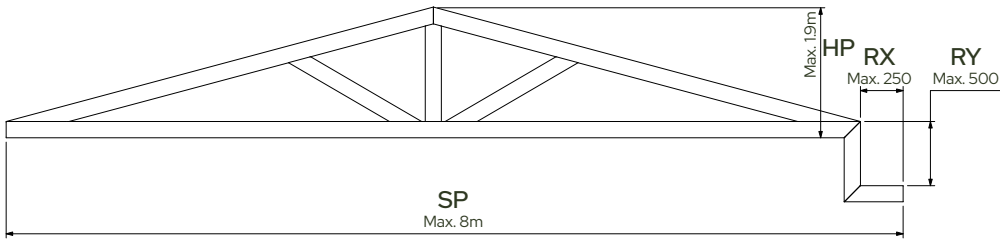
SP _____
HT _____
RX _____
RY _____
LX _____
LY _____

TRUSS ORDER PARAMETERS

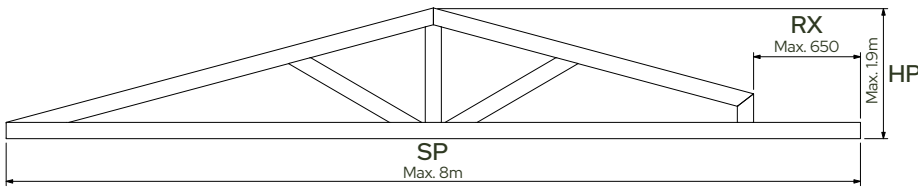
TRUSS STANDARD END



SP _____
HT _____

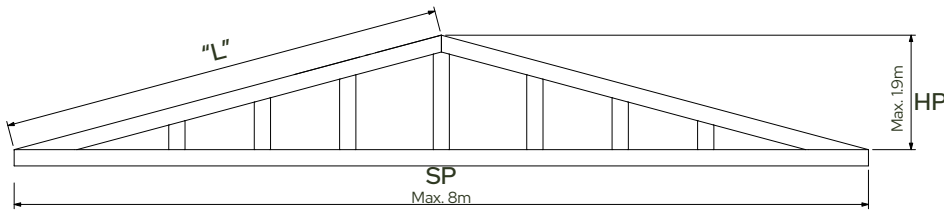


SP _____
HT _____
RX _____
RY _____
LX _____
LY _____

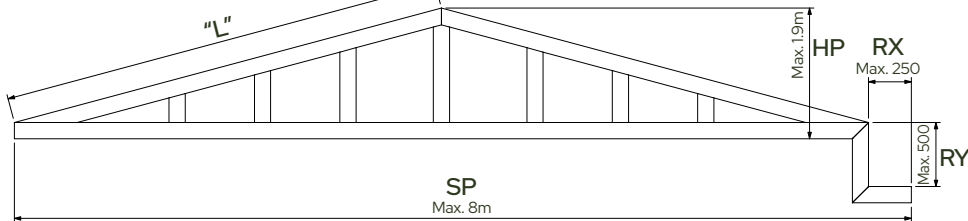


SP _____
HT _____
RX _____
LX _____

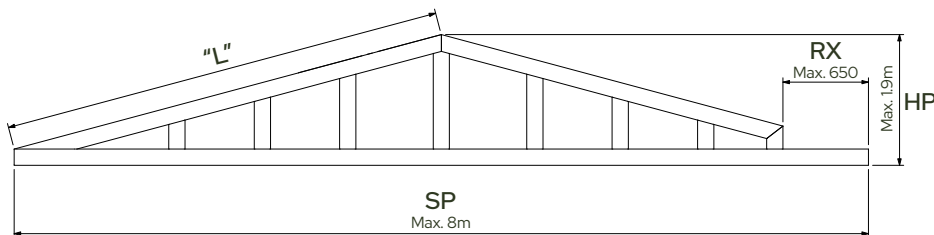
TRUSS END COLONIAL



SP _____
HT _____
LX _____



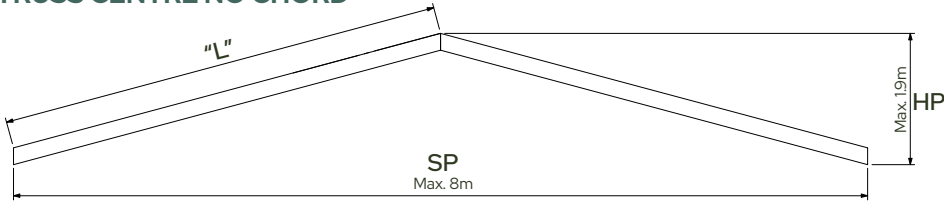
SP _____
HT _____
RX _____
LX _____
RY _____



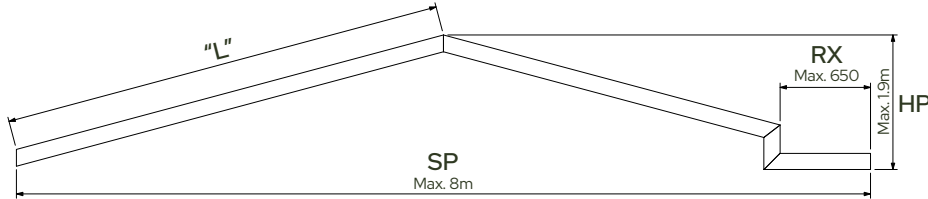
SP _____
HT _____
RX _____
LX _____

TRUSS ORDER PARAMETERS

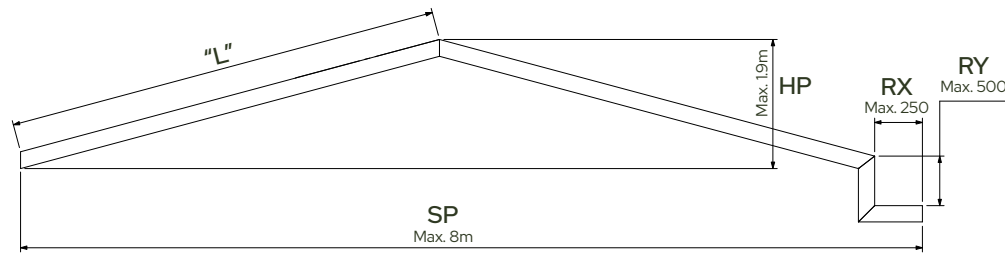
TRUSS CENTRE NO CHORD



SP _____
HT _____

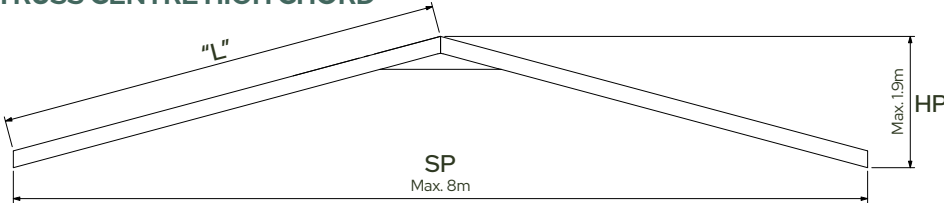


SP _____
HT _____
RX _____
RY _____
LX _____

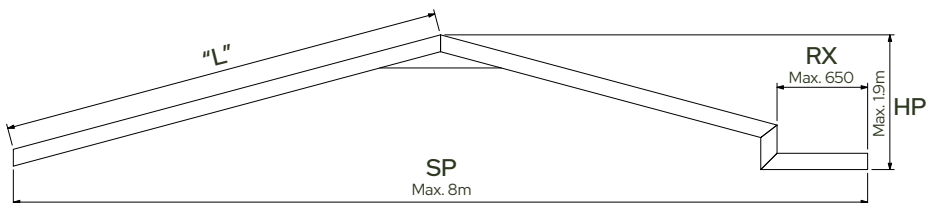


SP _____
HT _____
RX _____
RY _____

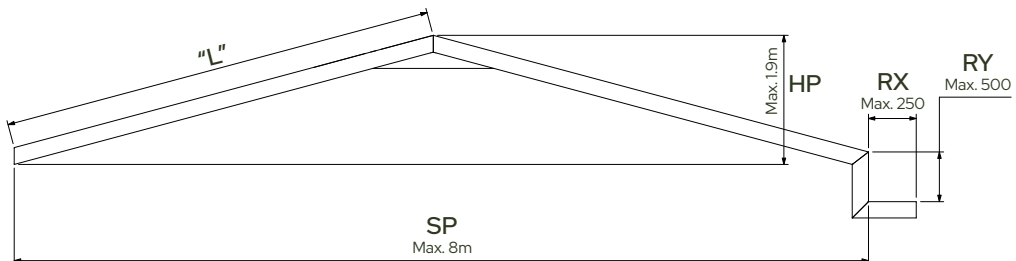
TRUSS CENTRE HIGH CHORD



SP _____
HT _____



SP _____
HT _____
RX _____
LX _____



SP _____
HT _____
RX _____
RY _____
LX _____
LY _____

Landsdale

17-23 Hoskins Road,
Landsdale - WA 6065

(08) 9309 1303
sales@cmiwa.com.au

Bibra Lake

60 Barberry Way,
Bibra Lake - WA 6163

(08) 6200 1155
sales@cmiwa.com.au

Busselton

22 Cook Street,
Busselton - WA 6280

(08) 9754 3884
busselton@cmiwa.com.au

Geraldton

2a Larkin Street,
Geraldton - WA 6530

(08) 9921 1399
geraldton@cmiwa.com.au

